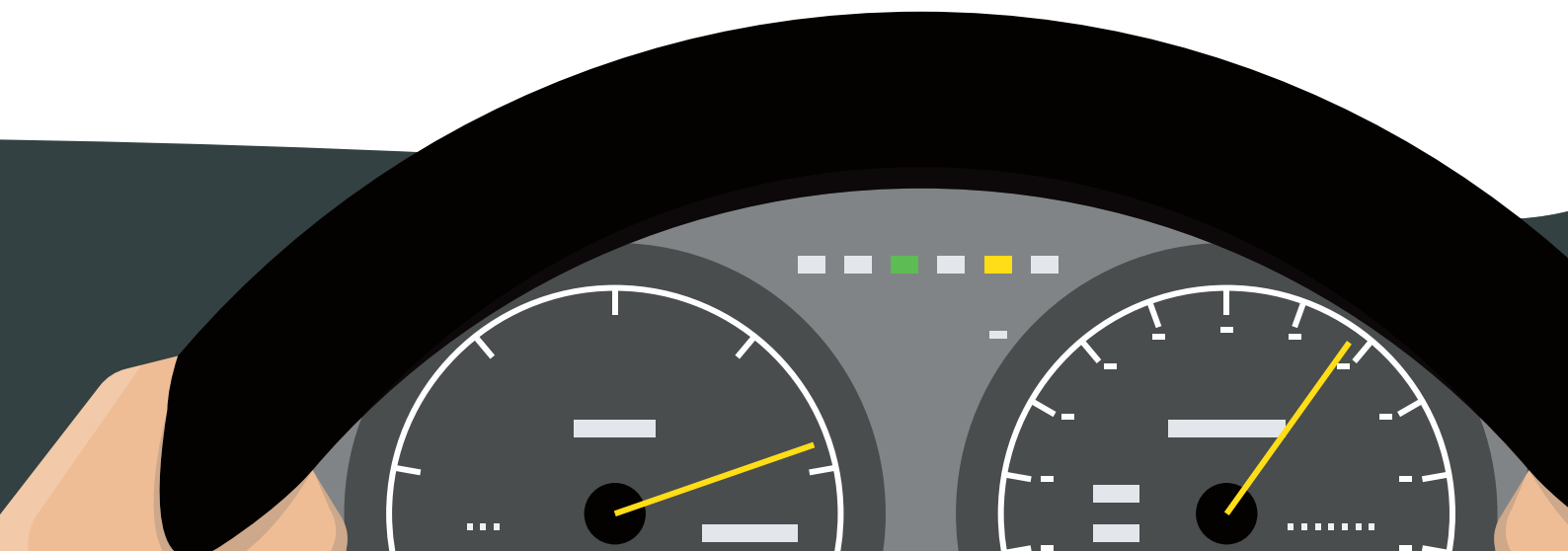
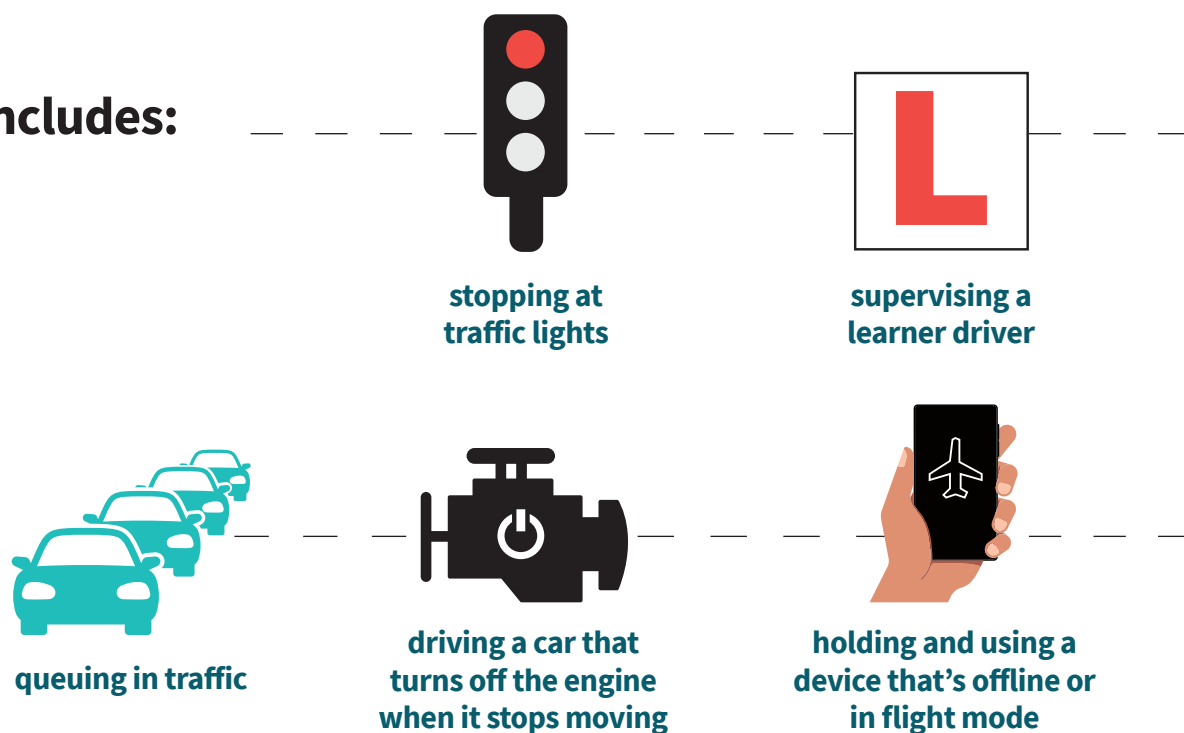


Use of mobile devices while driving: key changes to the law

In March a new law came into effect regarding the use of mobile phones when behind the wheel. This infographic illustrates the key aspects of the law change.

It's now “illegal to hold and use a phone, sat nav, tablet, or any device that can send or receive data, while driving or riding a motorcycle.”¹

This includes:



Exceptions to this are if you:



need to call
999 or 112
in an emergency



are safely
parked



are making a contactless
payment in a vehicle that
is not moving, for example
at a drive-through



are using the
device to park your
vehicle remotely

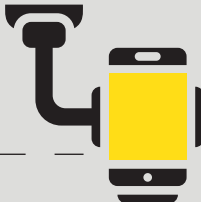
You can use the device hands-free as long as you don't hold them at any point. The following are considered 'hands-free':



Bluetooth
headset



Voice
command



Windscreen
mount



Dashboard
holder



Built in sat nav

Penalties can include:



Up to 6
penalty points



Maximum fine
of £2,500



Loss
of licence



Driving
ban

¹ Using a phone, sat nav, or other device when driving, [gov.uk, 2022](https://www.gov.uk/2022/02/01/using-a-phone-sat-nav-or-other-device-when-driving).
Contains public sector information licensed under the Open Government Licence v3.0